



Floor Plans



Edgecombe

One bedroom apartment

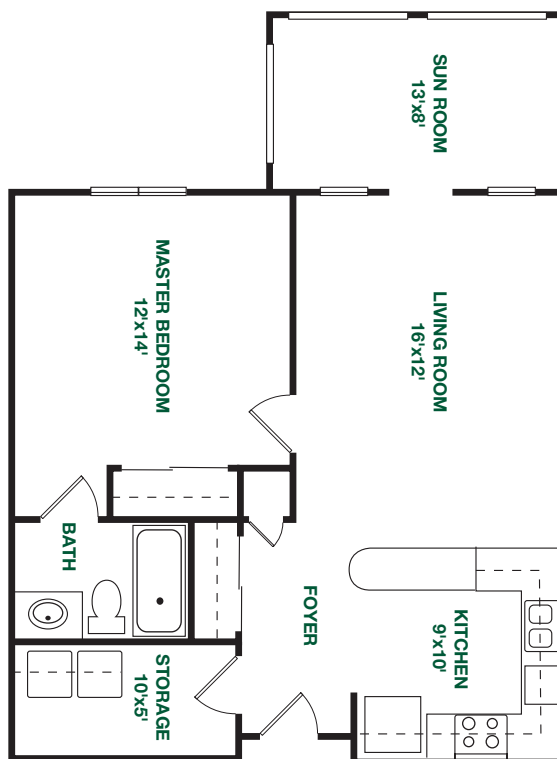
HEATED

717

square feet

CAMPUS

North and
Central



$\frac{1}{8}$ inch is
approximately 1 foot

Plans and
dimensions are
approximate and
subject to changes
without prior notice.

Revised September 2012

Lenoir

One bedroom expanded apartment

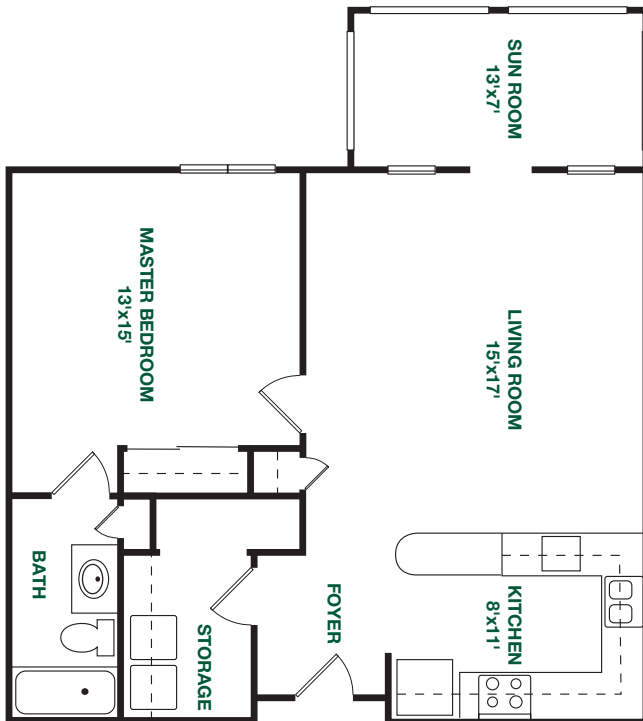
HEATED

790

square feet

CAMPUS

North and
Central



$\frac{1}{8}$ inch is
approximately 1 foot

Plans and
dimensions are
approximate and
subject to changes
without prior notice.

Revised September 2012



Forsyth

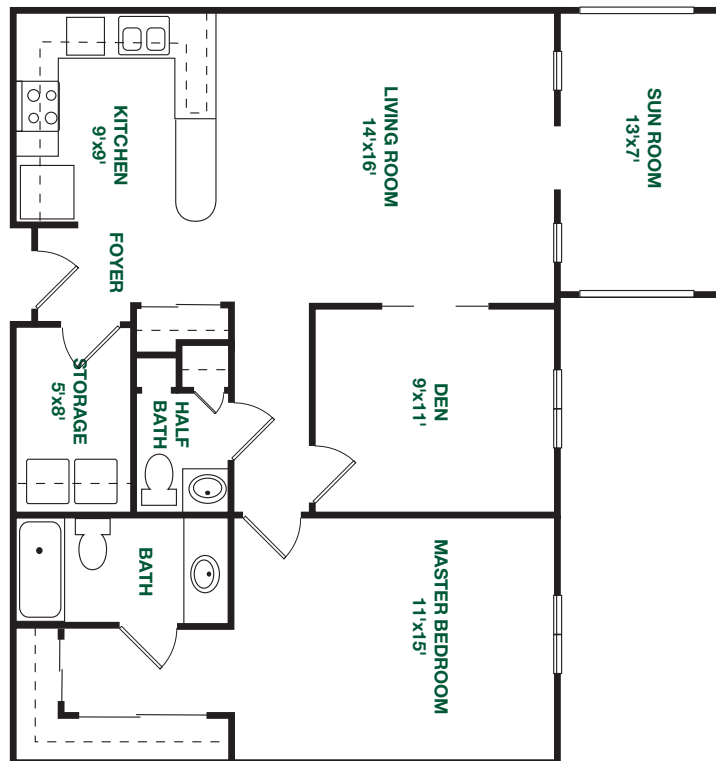
One bedroom apartment with den

HEATED

1007
square feet

CAMPUS

**North and
Central**



1/8 inch is
approximately 1 foot

Plans and
dimensions are
approximate and
subject to changes
without prior notice.

Revised September 2012





Iredell

Twin master apartment

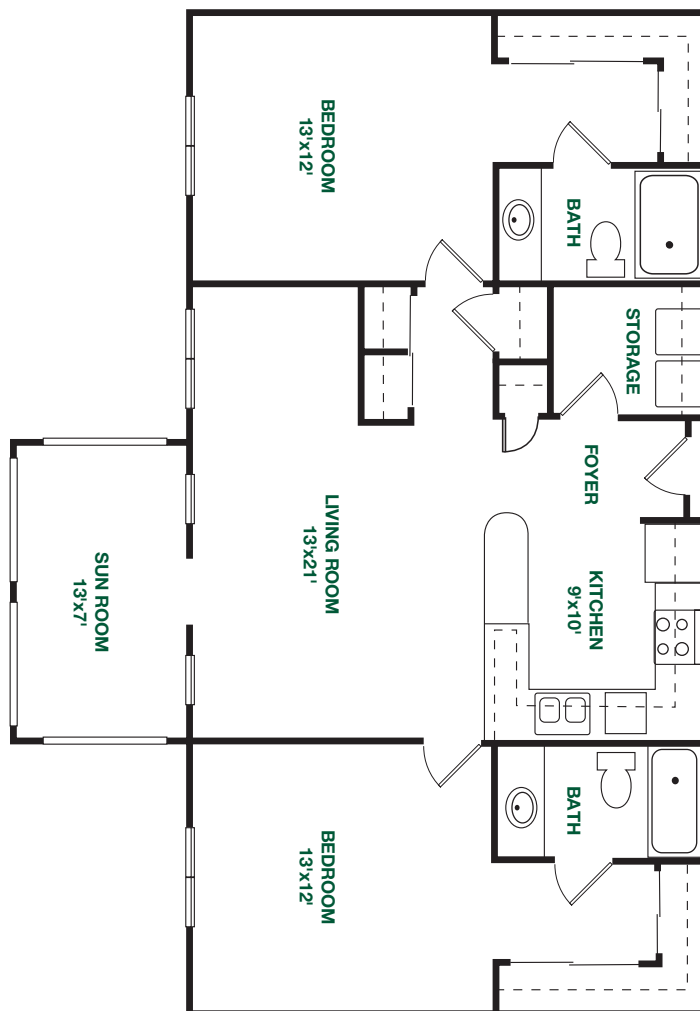
HEATED

1187

square feet

CAMPUS

North and
Central



$\frac{1}{8}$ inch is
approximately 1 foot

Plans and
dimensions are
approximate and
subject to changes
without prior notice.

Revised September 2012





Julian

Twin master apartment with den

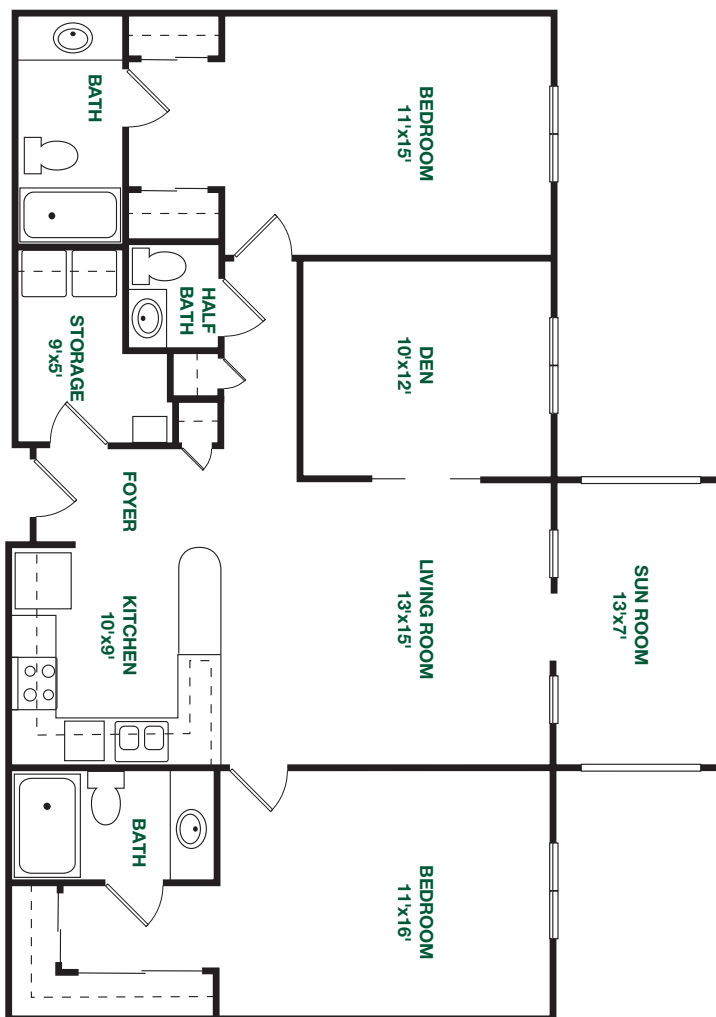
HEATED

1302

square feet

CAMPUS

**North and
Central**



1/8 inch is
approximately 1 foot

Plans and
dimensions are
approximate and
subject to changes
without prior notice.

Revised September 2012



Halifax

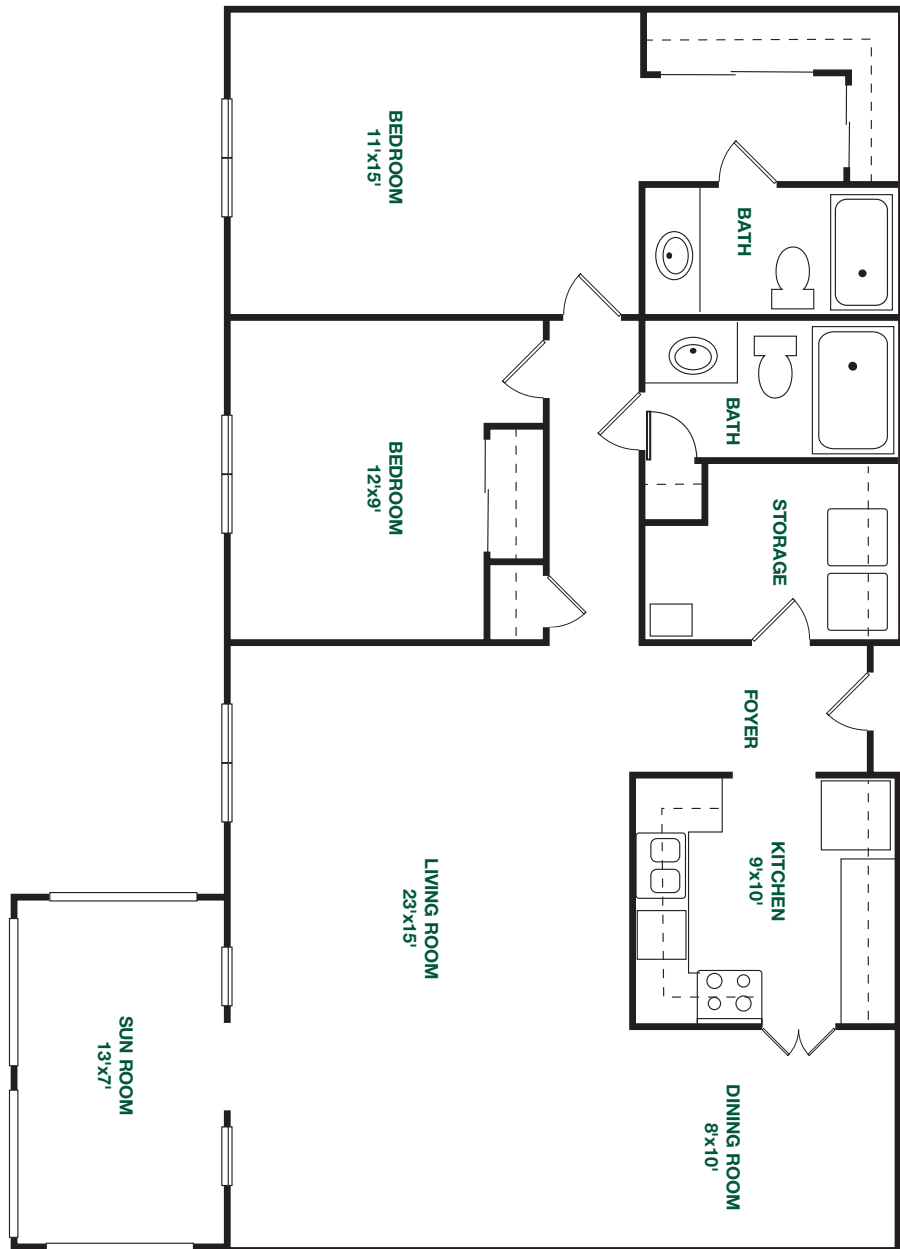
Two bedroom apartment

HEATED

1312
square feet

CAMPUS

North and
Central



1/8 inch is
approximately 1 foot

Plans and
dimensions are
approximate and
subject to changes
without prior notice.

Revised September 2012



Kinston

Twin master apartment with den

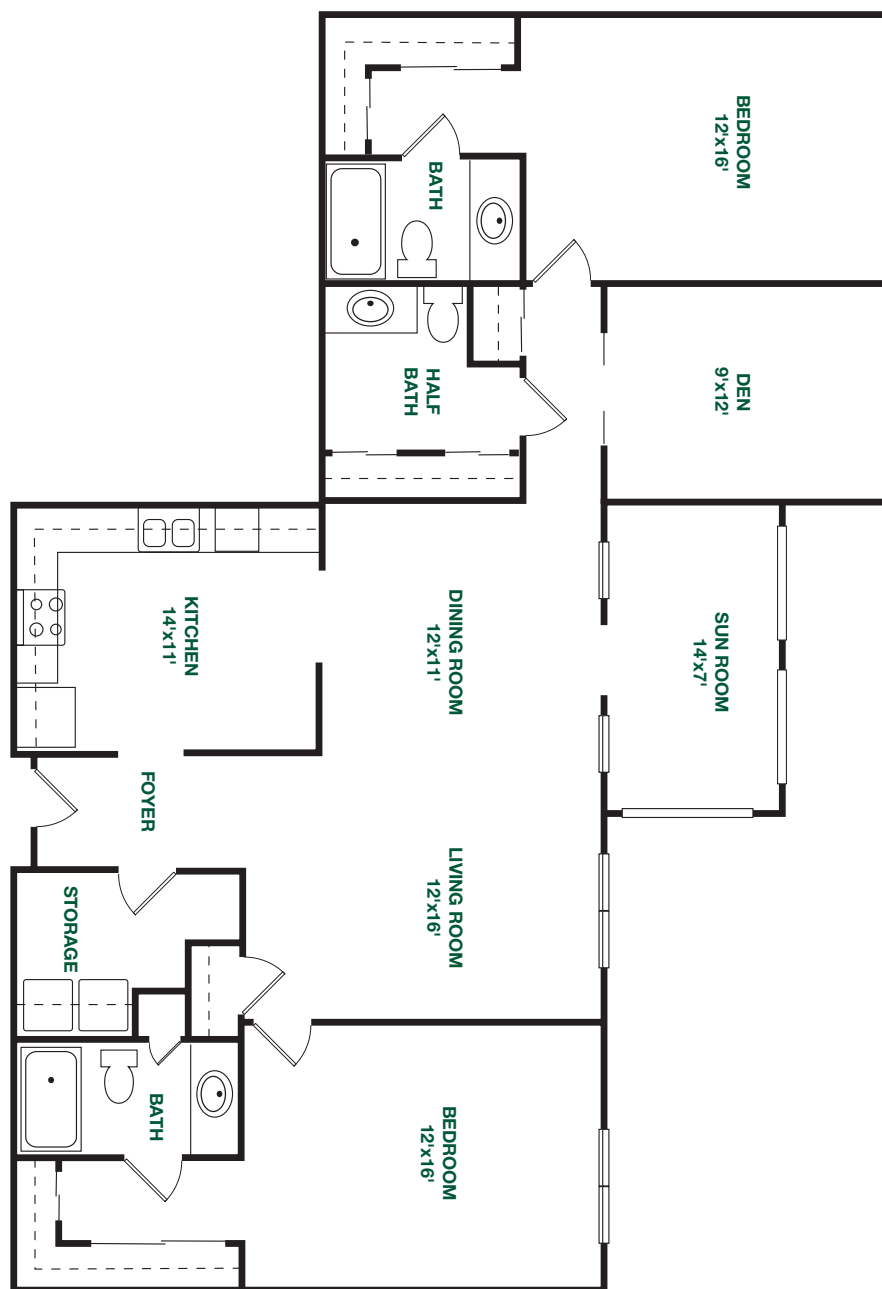
HEATED

1607

square feet

CAMPUS

**North and
Central**



1/8 inch is
approximately 1 foot

Plans and
dimensions are
approximate and
subject to changes
without prior notice.

Revised September 2012



Albemarle

One bedroom villa with den

HEATED

1180

square feet

Note: The Albemarle floor plans have been expanded and have heated space averaging more than 1,300 square feet.

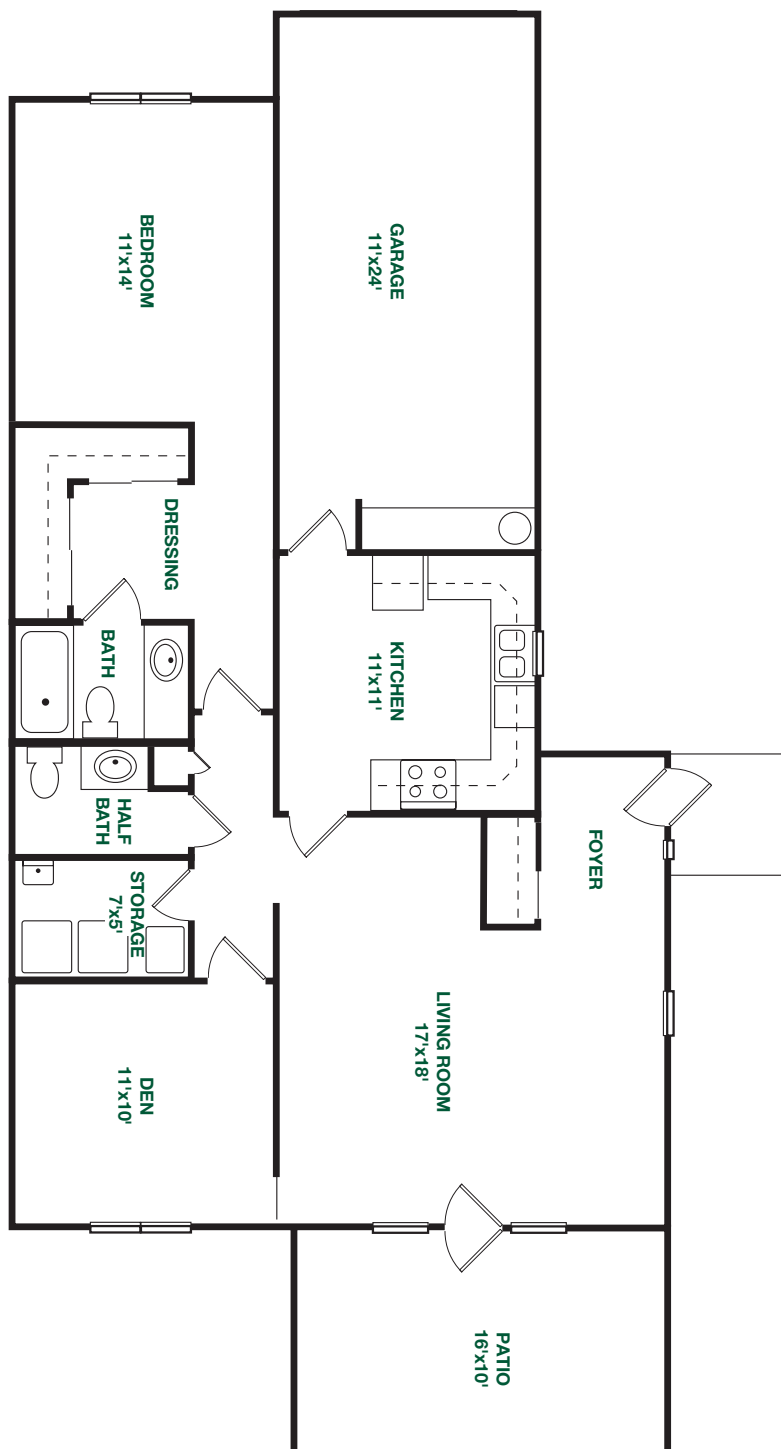
GARAGE

264

square feet

CAMPUS

**North and
Central**



1/8 inch is
approximately 1 foot

Plans and
dimensions are
approximate and
subject to changes
without prior notice.

Revised September 2012

Cumberland

Twin master villa

HEATED

1502

square feet

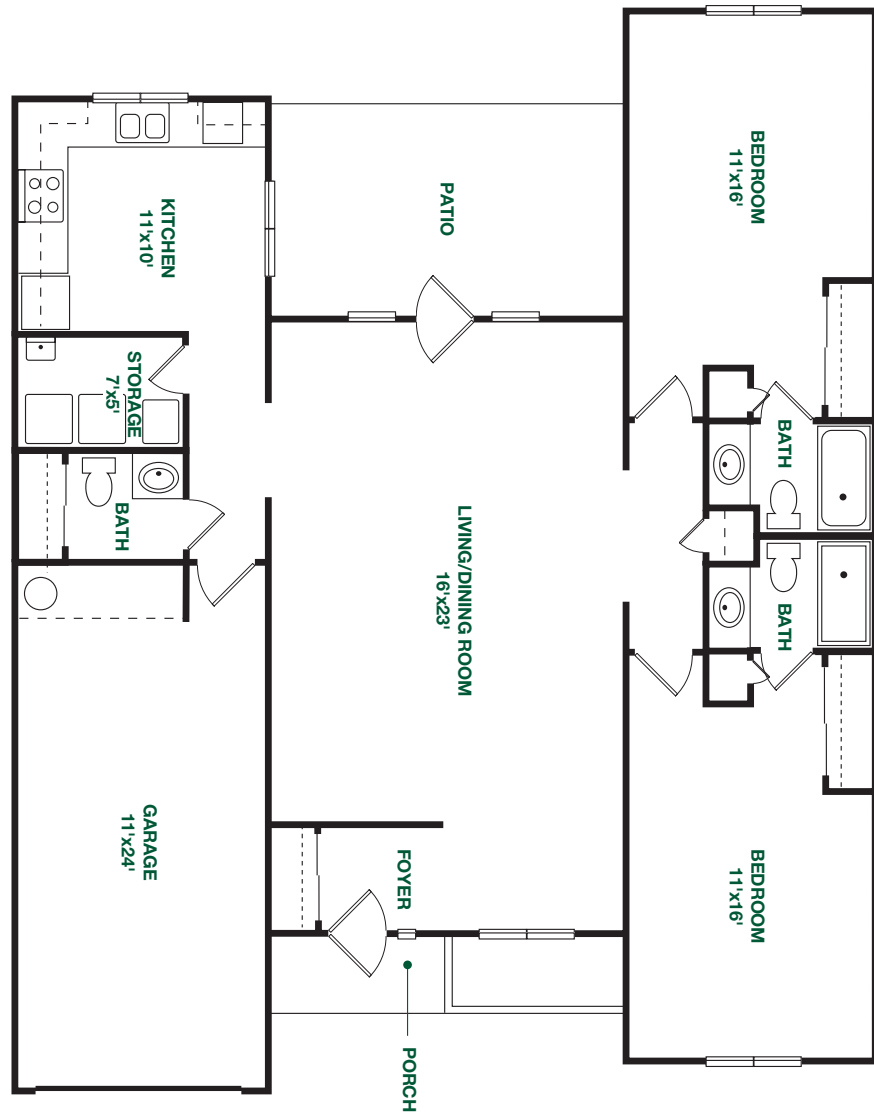
GARAGE

264

square feet

CAMPUS

North and
Central



1/8 inch is
approximately 1 foot

Plans and
dimensions are
approximate and
subject to changes
without prior notice.

Revised September 2012

Brunswick

Two bedroom villa

HEATED

1566

square feet

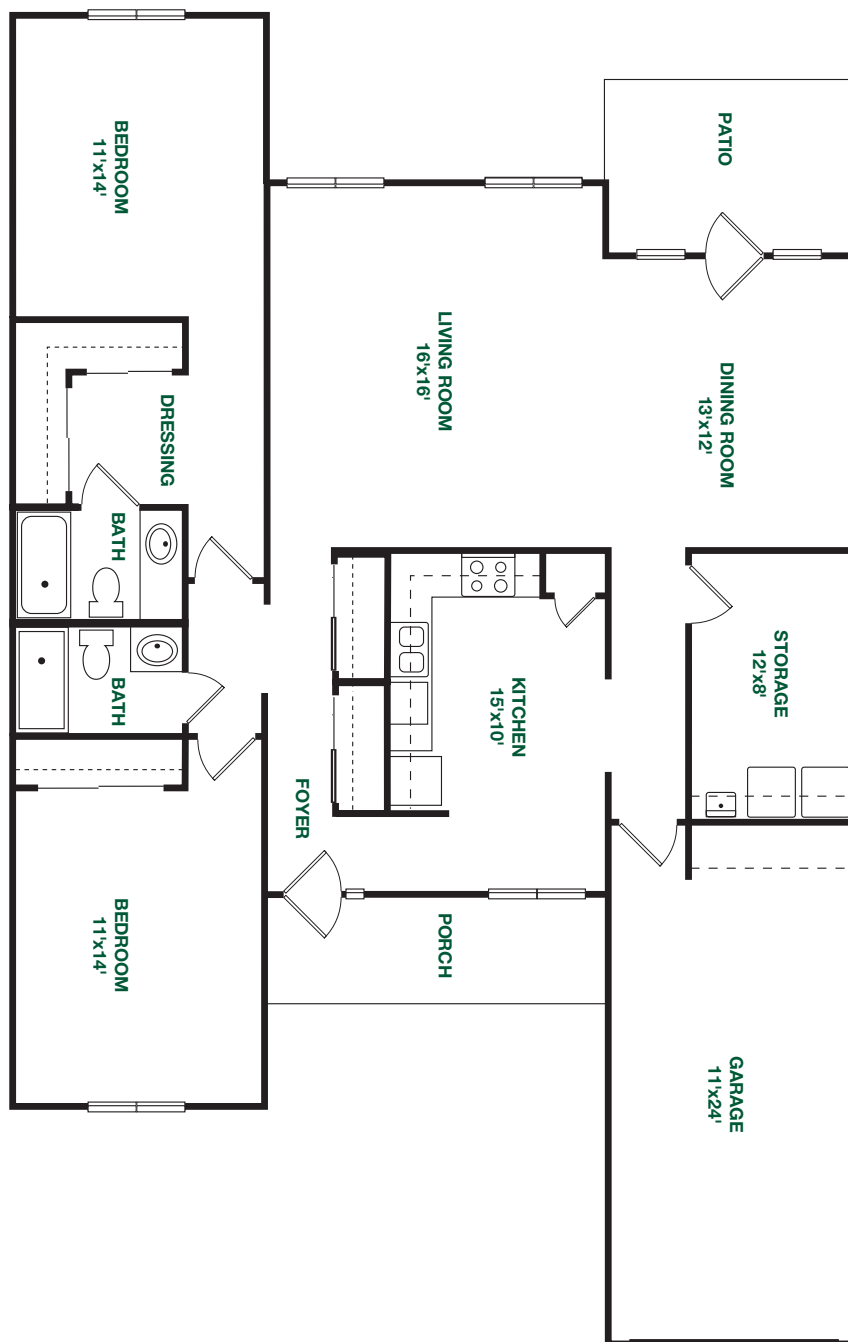
GARAGE

264

square feet

CAMPUS

North and
Central



1/8 inch is
approximately 1 foot

Plans and
dimensions are
approximate and
subject to changes
without prior notice.

Revised September 2012

Davidson

Two bedroom villa with den

HEATED

1584
square feet

GARAGE

264
square feet

CAMPUS

North and
Central



1/8 inch is
approximately 1 foot

Plans and
dimensions are
approximate and
subject to changes
without prior notice.

Revised September 2012

Chatham

Two bedroom villa

HEATED

1656
square feet

GARAGE

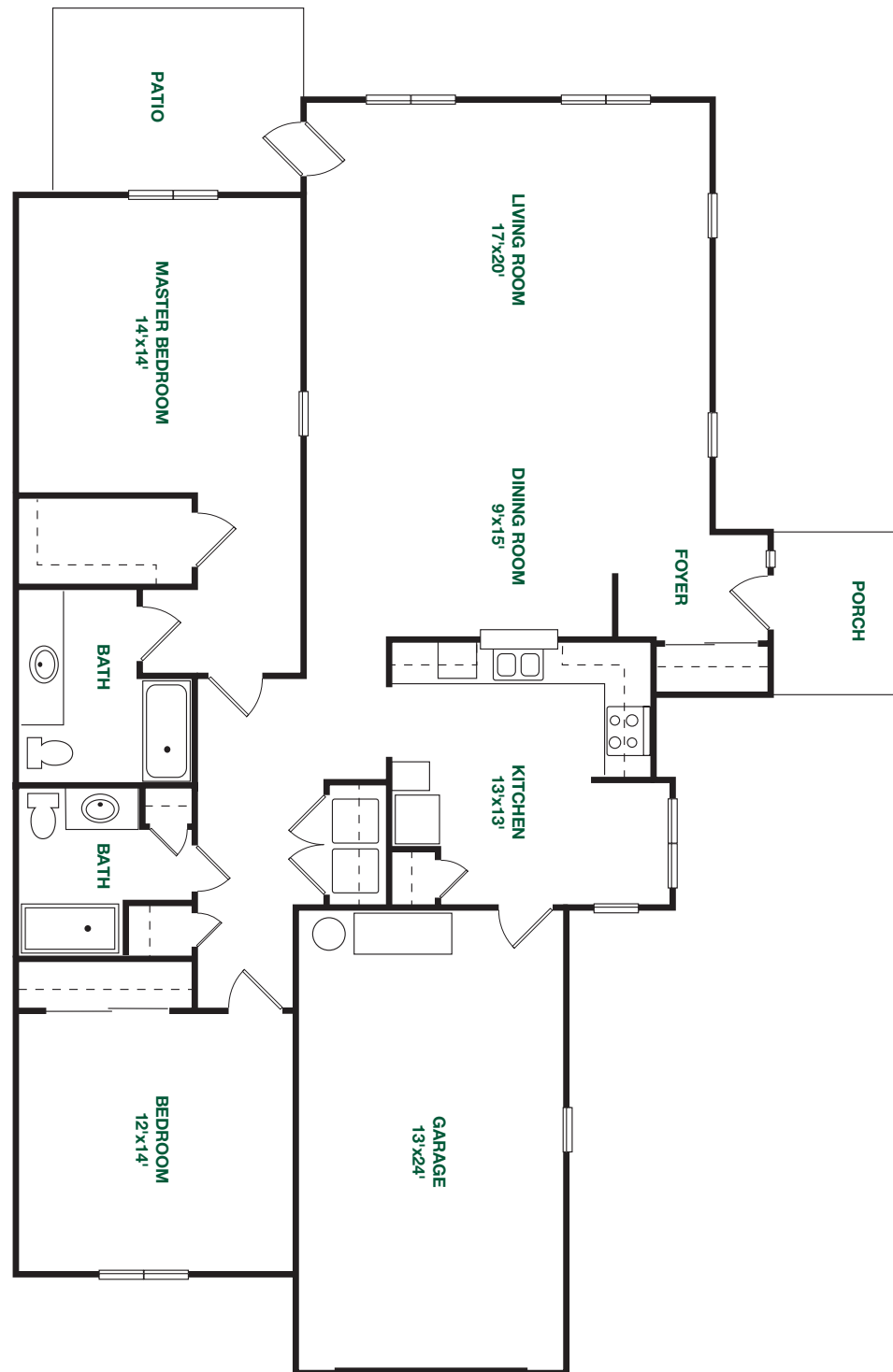
312
square feet

CAMPUS

South

PLUS

Vaulted ceilings



1/8 inch is
approximately 1 foot

Plans and
dimensions are
approximate and
subject to changes
without prior notice.

Revised September 2012

Manchester

Two bedroom villa

HEATED

1722

square feet

GARAGE

325

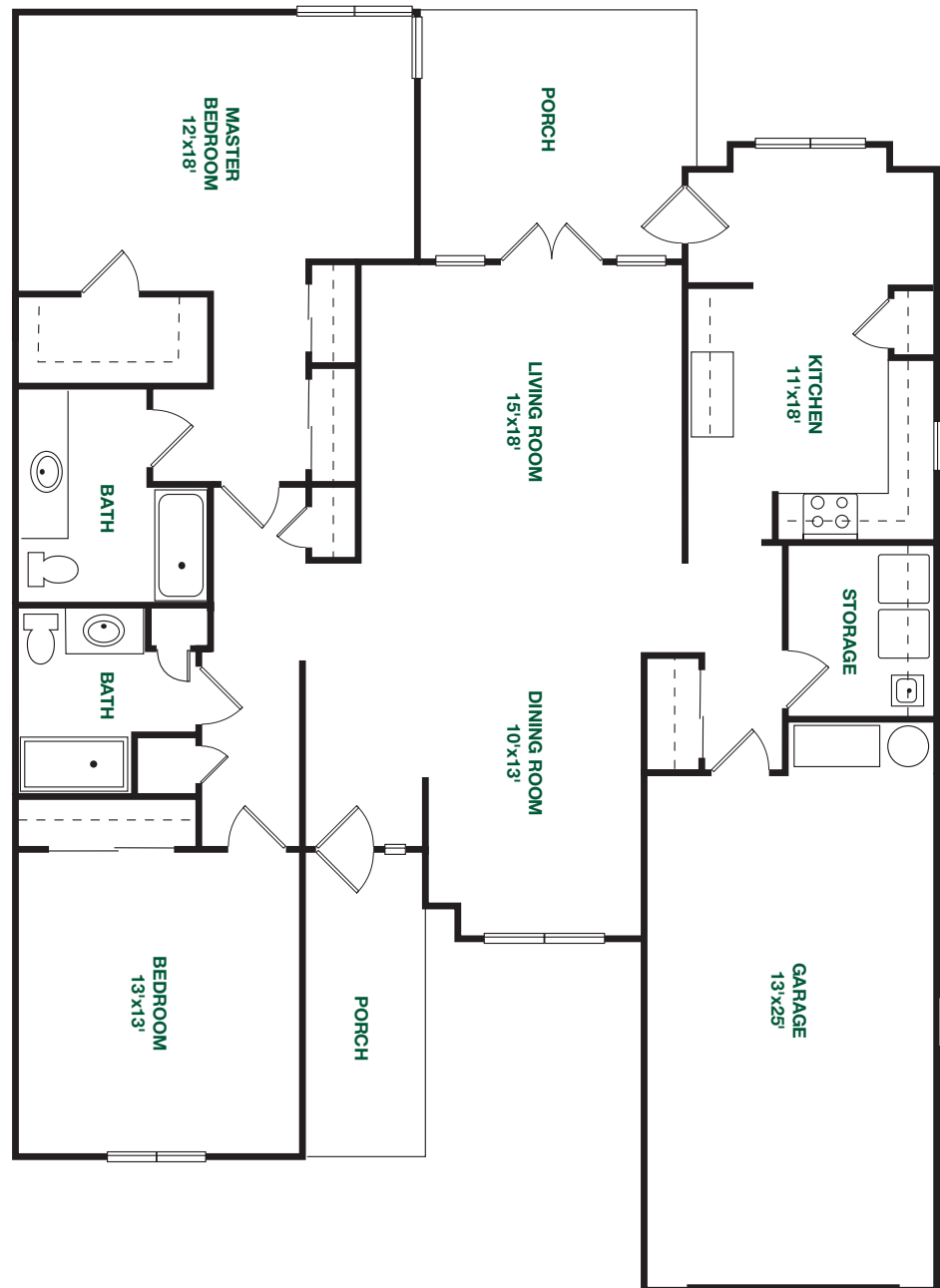
square feet

CAMPUS

South

PLUS

Vaulted ceilings



1/8 inch is
approximately 1 foot

Plans and
dimensions are
approximate and
subject to changes
without prior notice.

Revised September 2012

Fairfax

Two bedroom villa

HEATED

1775

square feet

GARAGE

312

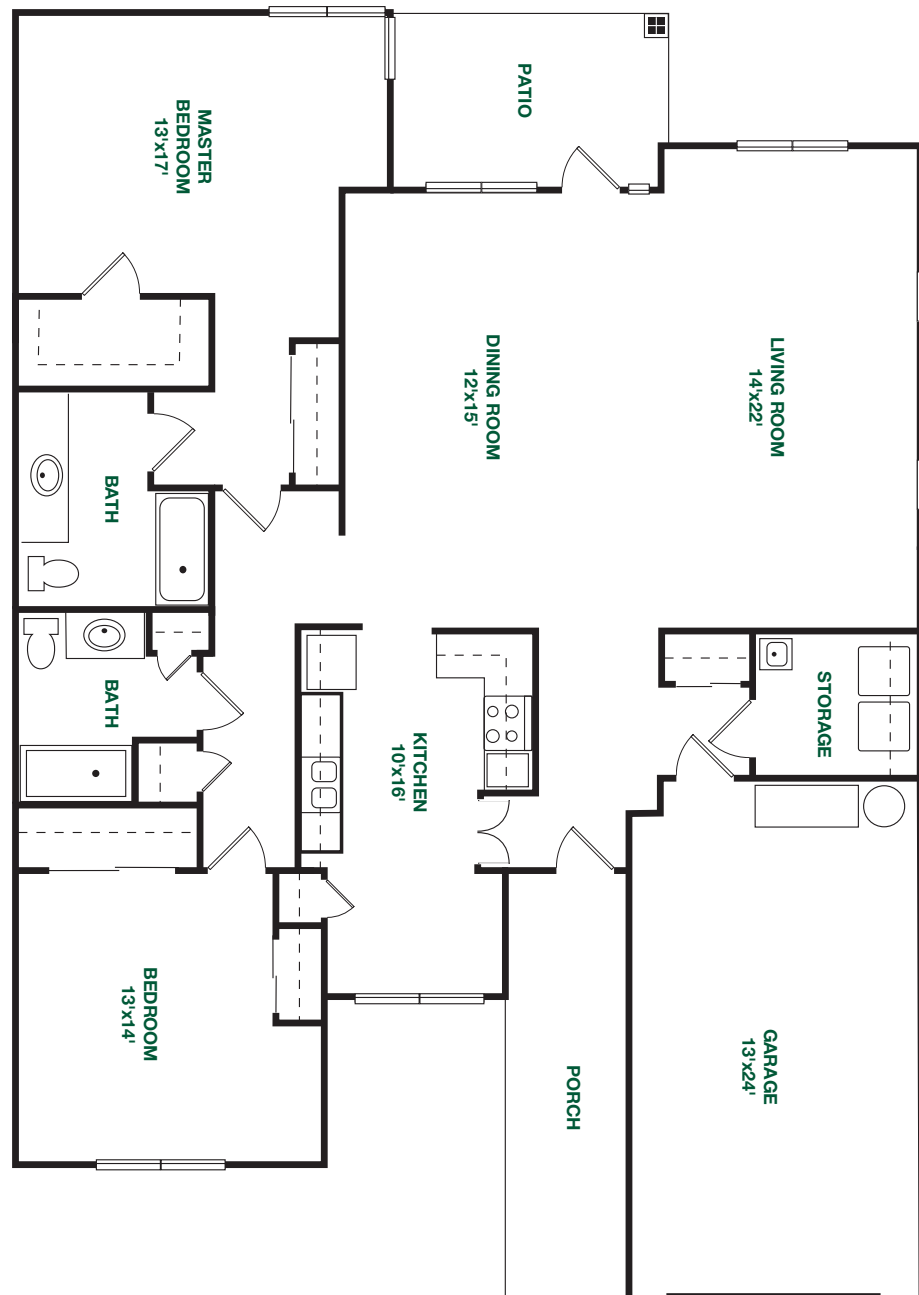
square feet

CAMPUS

South

PLUS

Vaulted ceilings



1/8 inch is
approximately 1 foot

Plans and
dimensions are
approximate and
subject to changes
without prior notice.

Revised September 2012

Regent

Two bedroom villa with den

HEATED

1822

square feet

GARAGE

288

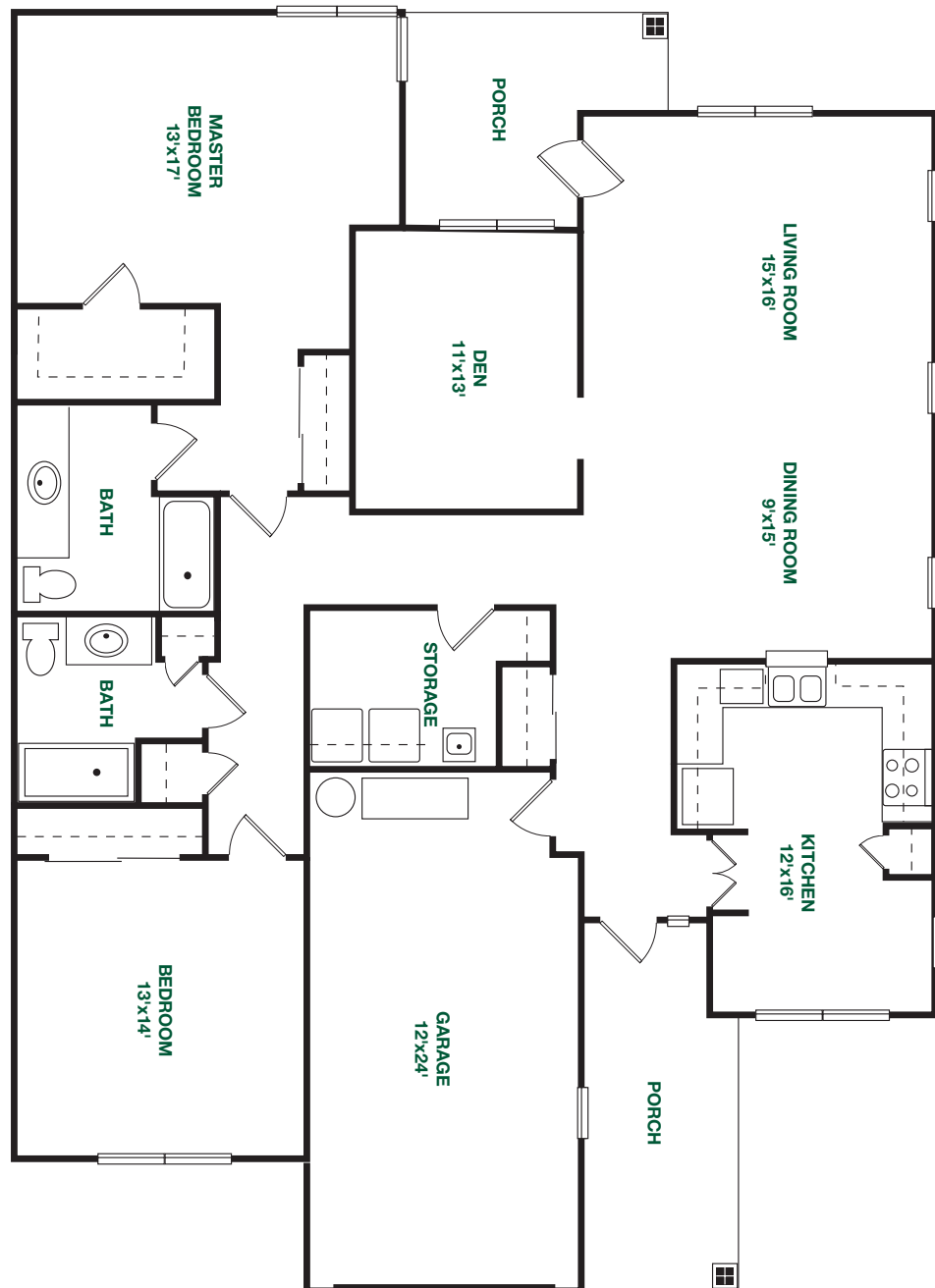
square feet

CAMPUS

South

PLUS

Vaulted ceilings



1/8 inch is
approximately 1 foot

Plans and
dimensions are
approximate and
subject to changes
without prior notice.

Revised September 2012



Caldwell

Two bedroom villa

HEATED

1741

square feet

GARAGE

540

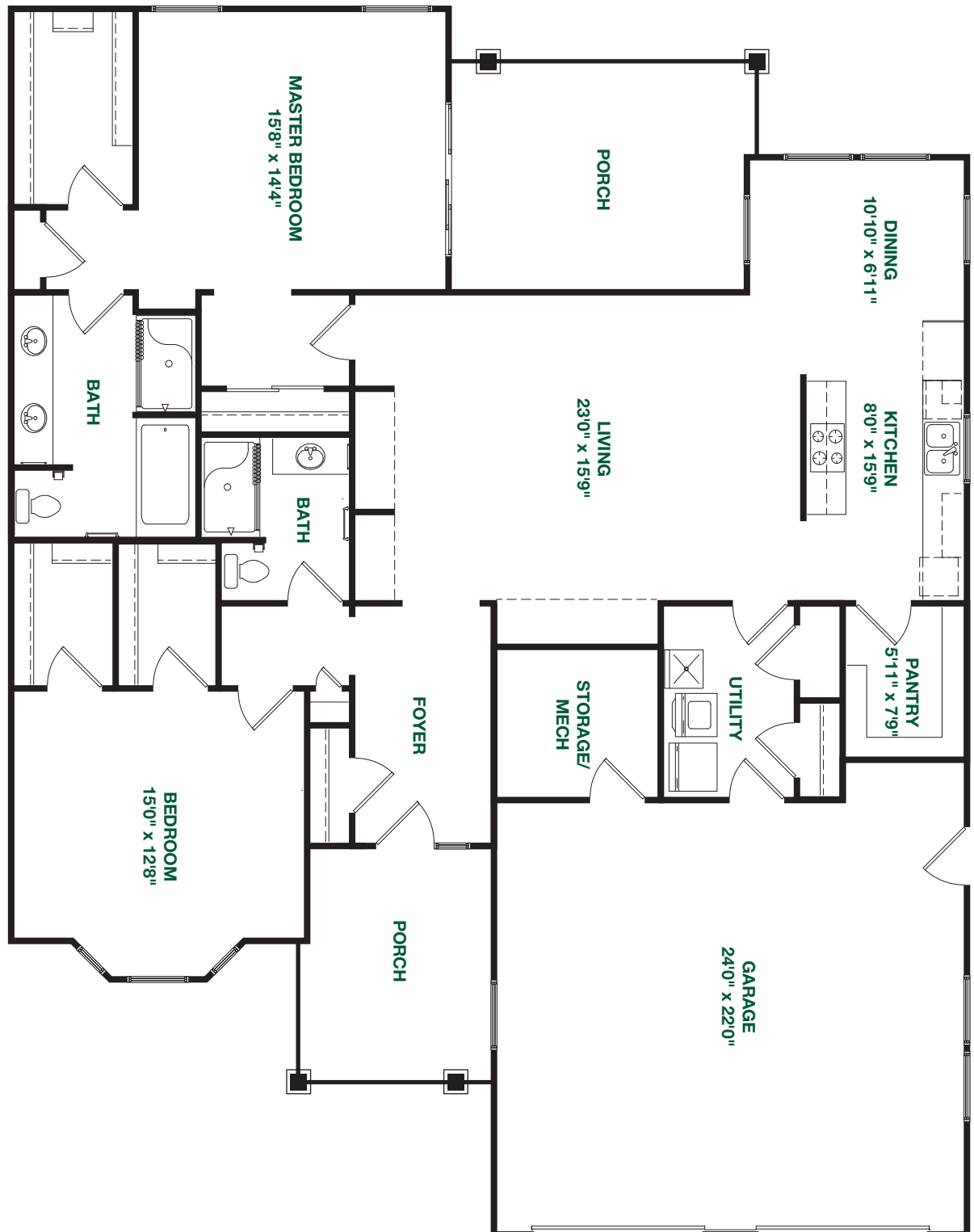
square feet

CAMPUS

East

PLUS

Vaulted ceilings



1/8 inch is
approximately 1 foot

Plans and
dimensions are
approximate and
subject to changes
without prior notice.

Revised September 2012





Hanover

Two bedroom villa

HEATED

1898

square feet

GARAGE

540

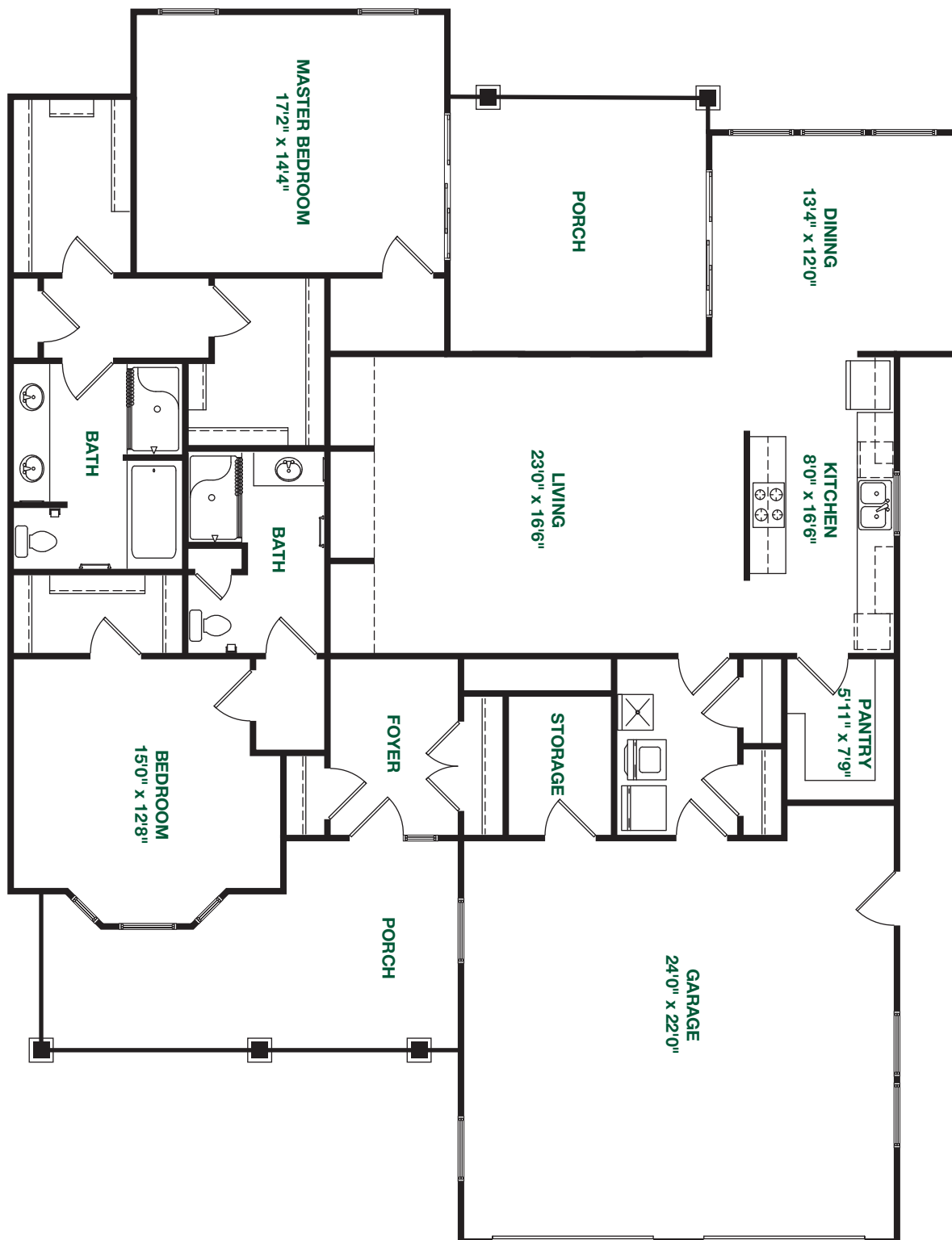
square feet

CAMPUS

East

PLUS

Vaulted ceilings



1/8 inch is
approximately 1 foot

Plans and
dimensions are
approximate and
subject to changes
without prior notice.

Revised September 2012



Madison

Two bedroom villa

HEATED

1983
square feet

GARAGE

534
square feet

CAMPUS

East

PLUS

Vaulted ceilings



1/8 inch is
approximately 1 foot

Plans and
dimensions are
approximate and
subject to changes
without prior notice.

Revised September 2012



Montgomery

Two bedroom villa with den

HEATED

2196

square feet

GARAGE

601

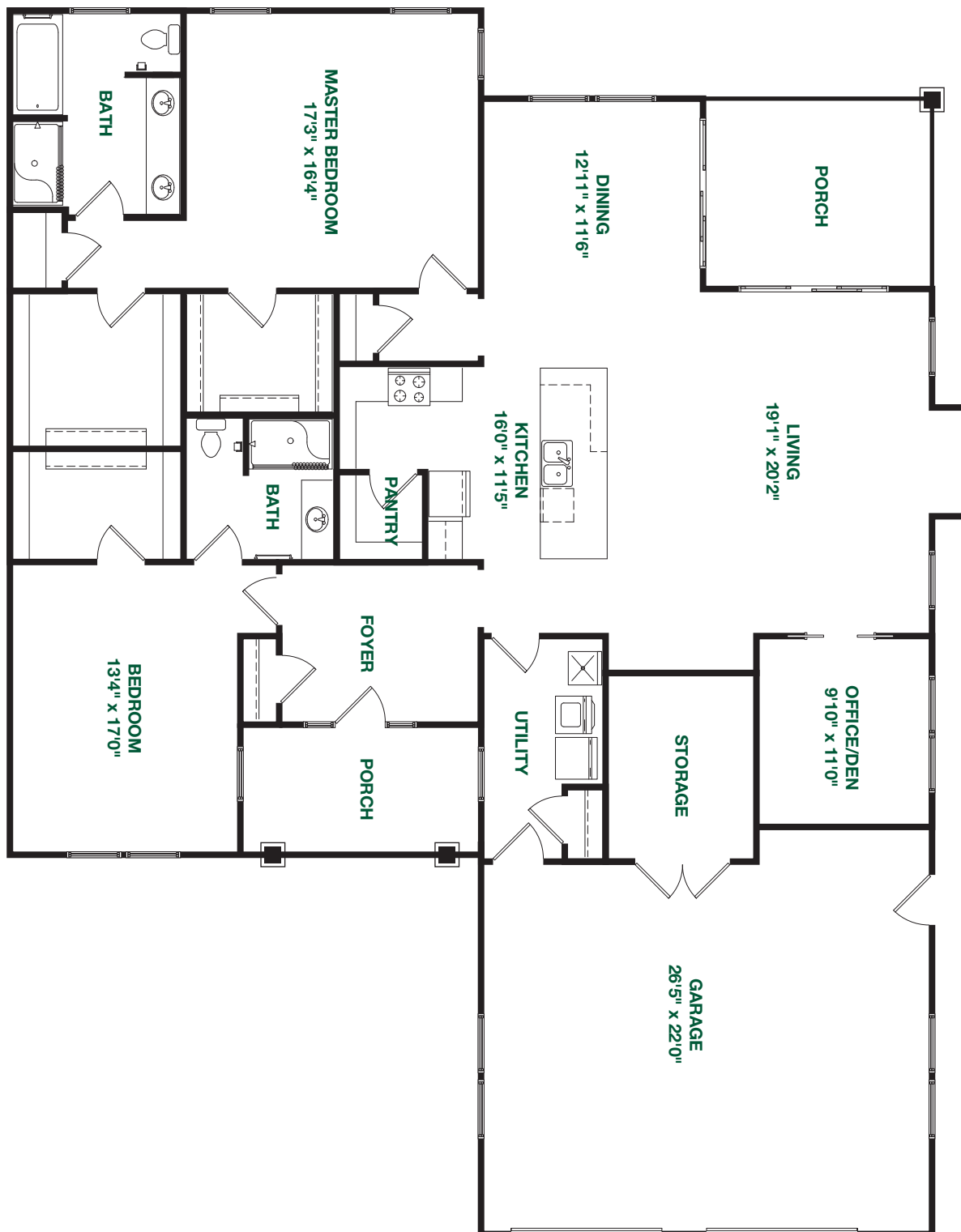
square feet

CAMPUS

East

PLUS

Vaulted ceilings



1/8 inch is
approximately 1 foot

Plans and
dimensions are
approximate and
subject to changes
without prior notice.

Revised September 2012





toll-free **800-458-6756**
local **919-942-4014**
fax **919-929-7808**

Carolina Meadows is licensed as a Continuing Care Retirement Facility under the General Statutes of the State of North Carolina.

